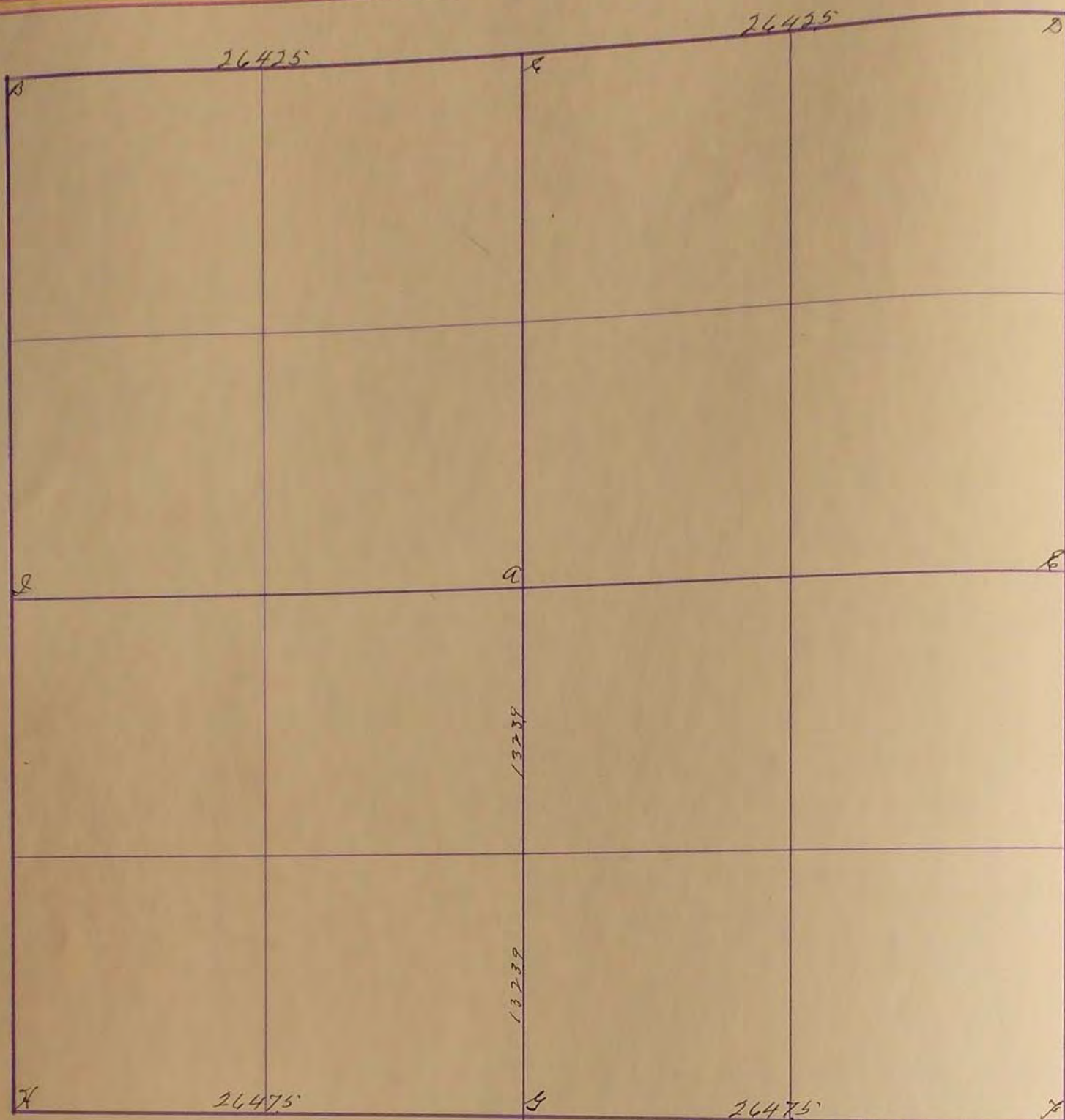


# SURVEYOR'S RECORD

Section 22

Township 105

Range 42



22  
23

Sept. 73 - 1931

A. Stone 12x12x16

B. See Sec. 21

C. established stone 10x10x16

D. See Sec. 23

E. See ...

F. See Sec. 23

G. established stone 6x6x18

H. See Sec. 21

I. Stone 2 on top

"G" located fieldstone March 29, 1967; Placed two pieces 3/4" steel rod 8" x 6" long @ center of stone: R.P. N&C, P.P., SW. 87.6'; R.P. N&C, T.P. Northwest 72.2'

1969

G. Iron Pin R.P. N&C P.P. SW - 96.70'  
N&C Cor. Post. SE. - 53.05'  
"X" on Culv. End S.E. - 52.70'

F. Iron Pin in Oil Mat R.P.  
"X" on Culv. Nut. NW - 47.65'  
SW - 48.45'

SURVEY No. \_\_\_\_\_

Section 22      Town 105      Range 42



## FIELD NOTES.

Sept. 23. 1931.

- A. Stone 12x12x16
- B. See Sec. 21
- C. Established Stone 10x10x16
- D. See sur. 23
- E. See "
- F. See Sec. 23
- G. Established Stone 6x6x18
- H. See Sec. 21
- I. Stone 2 on top